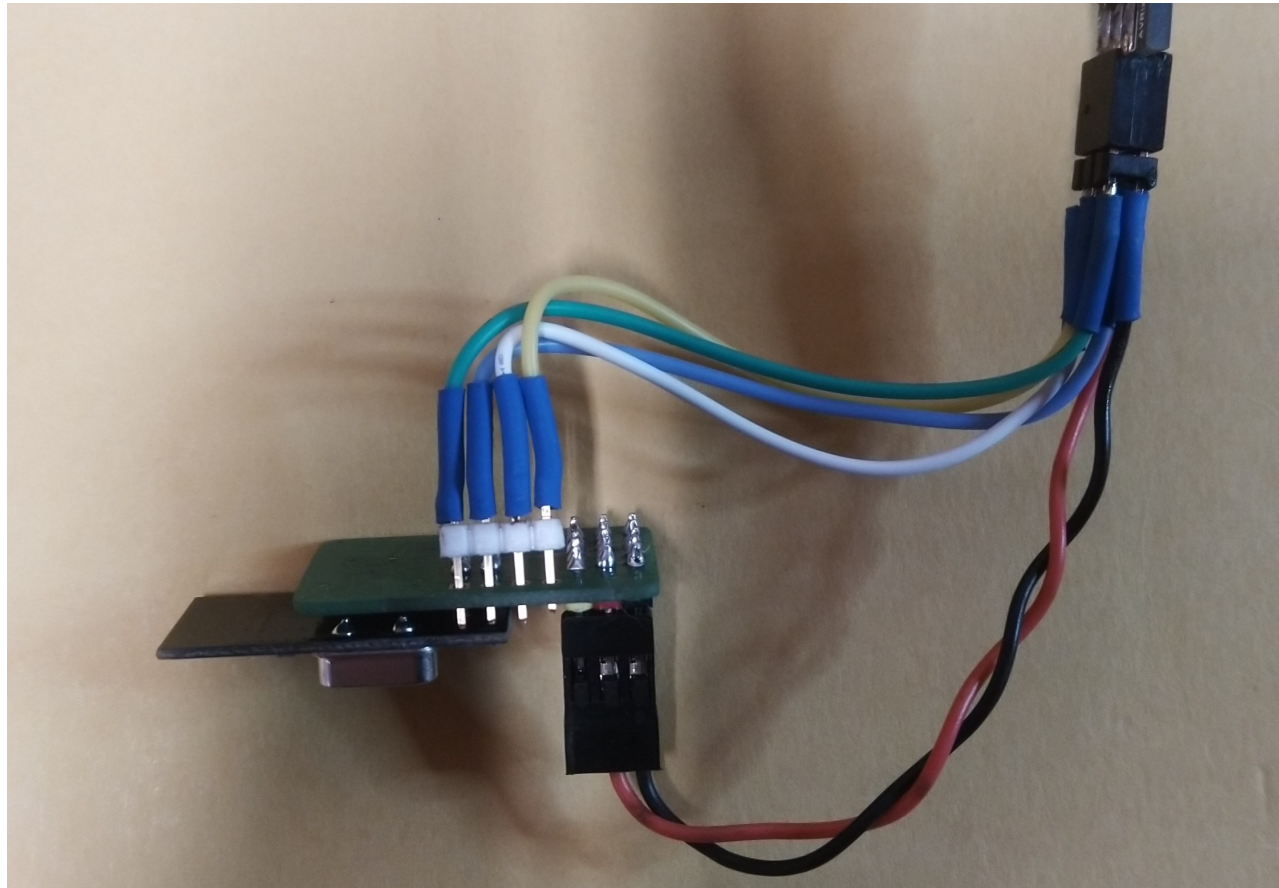
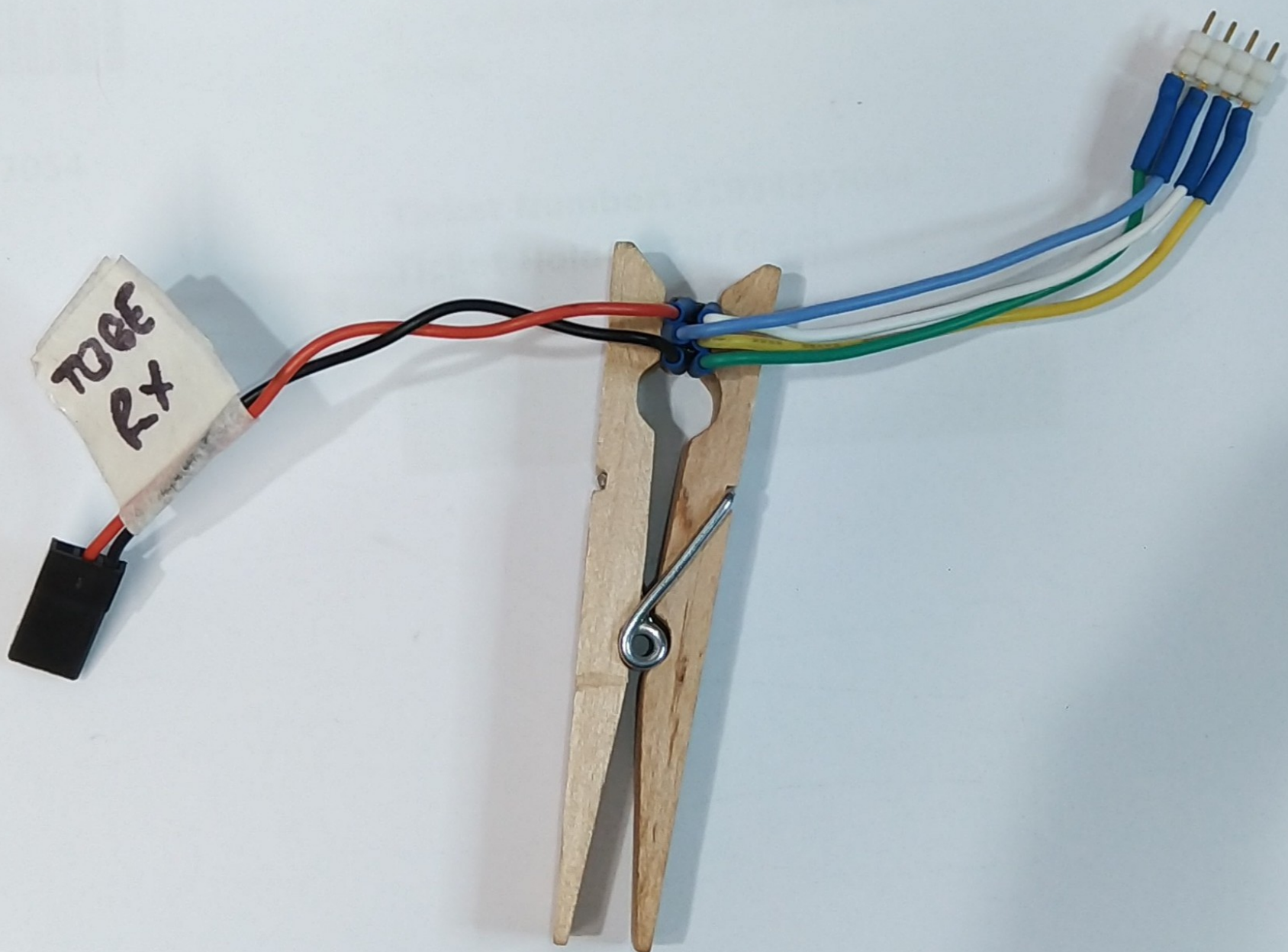


Tobe NRF24L01 Receiver

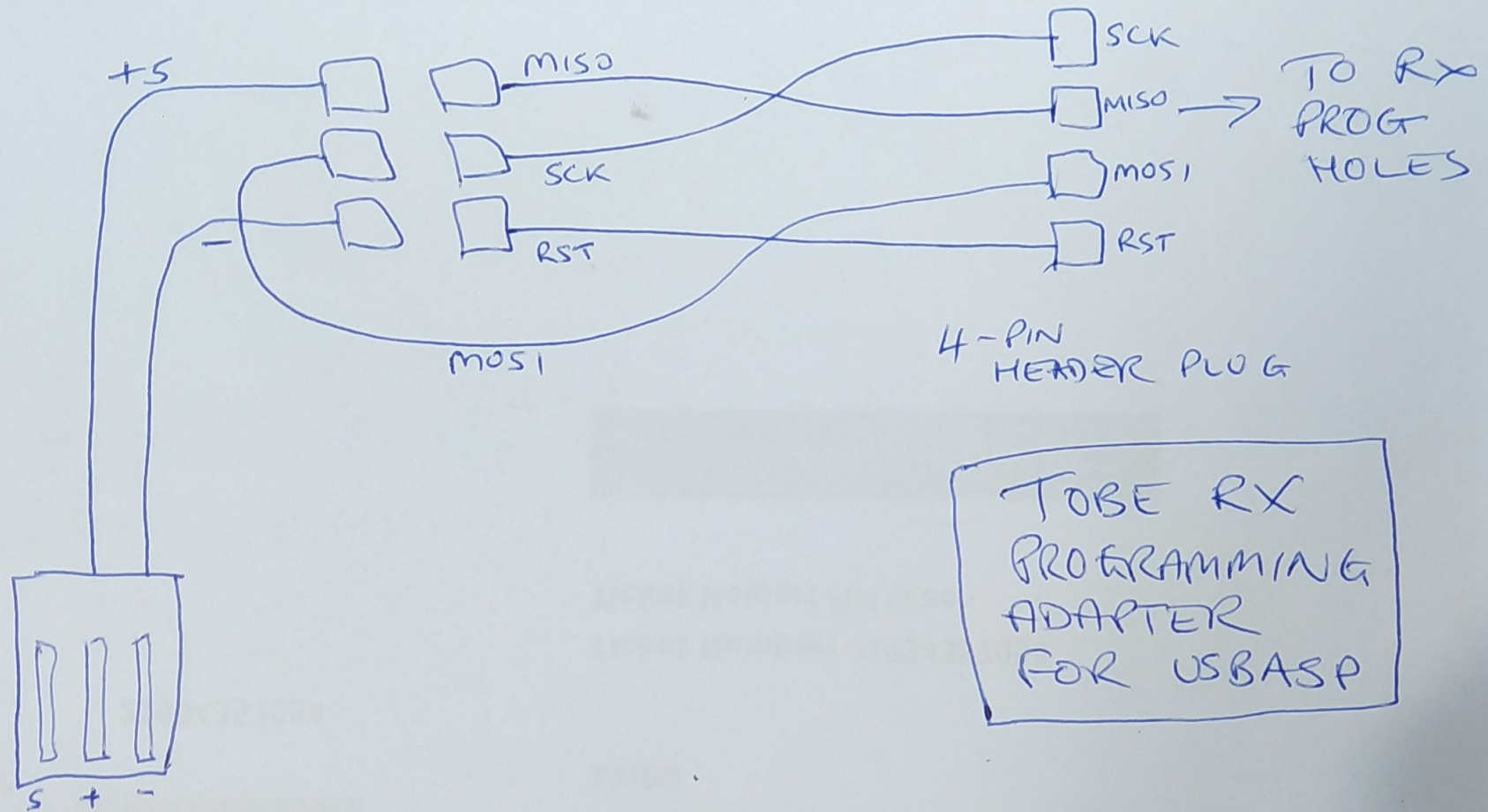
Programming: (Nano) remember new chips need USBASP 'slow' jumper before programming
Remove slow jumper after loading Bootloader (we dont use the bootloader but its a convenient way to enable 16mhz)

Tobe receiver USBASP connections:





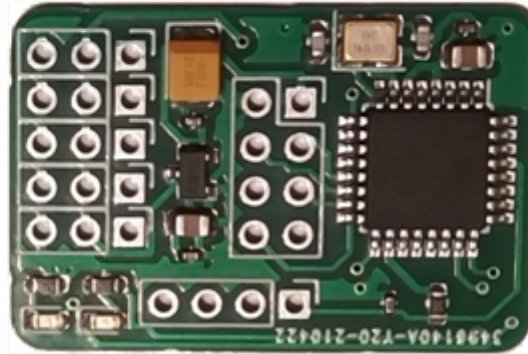
LOOKING DOWN ON SOLDER END OF ~~THE~~ PINS (SHORT END)



↳ PLUG INTO SERVO OUTPUTS (ANY)

NRF24L01+ Receiver using Tobe PCB (smallest version)

Ch1 Ail D2
Ch2 Ele D5
Ch3 Thr D4
Ch4 Rud D3
Power 5v or 1S



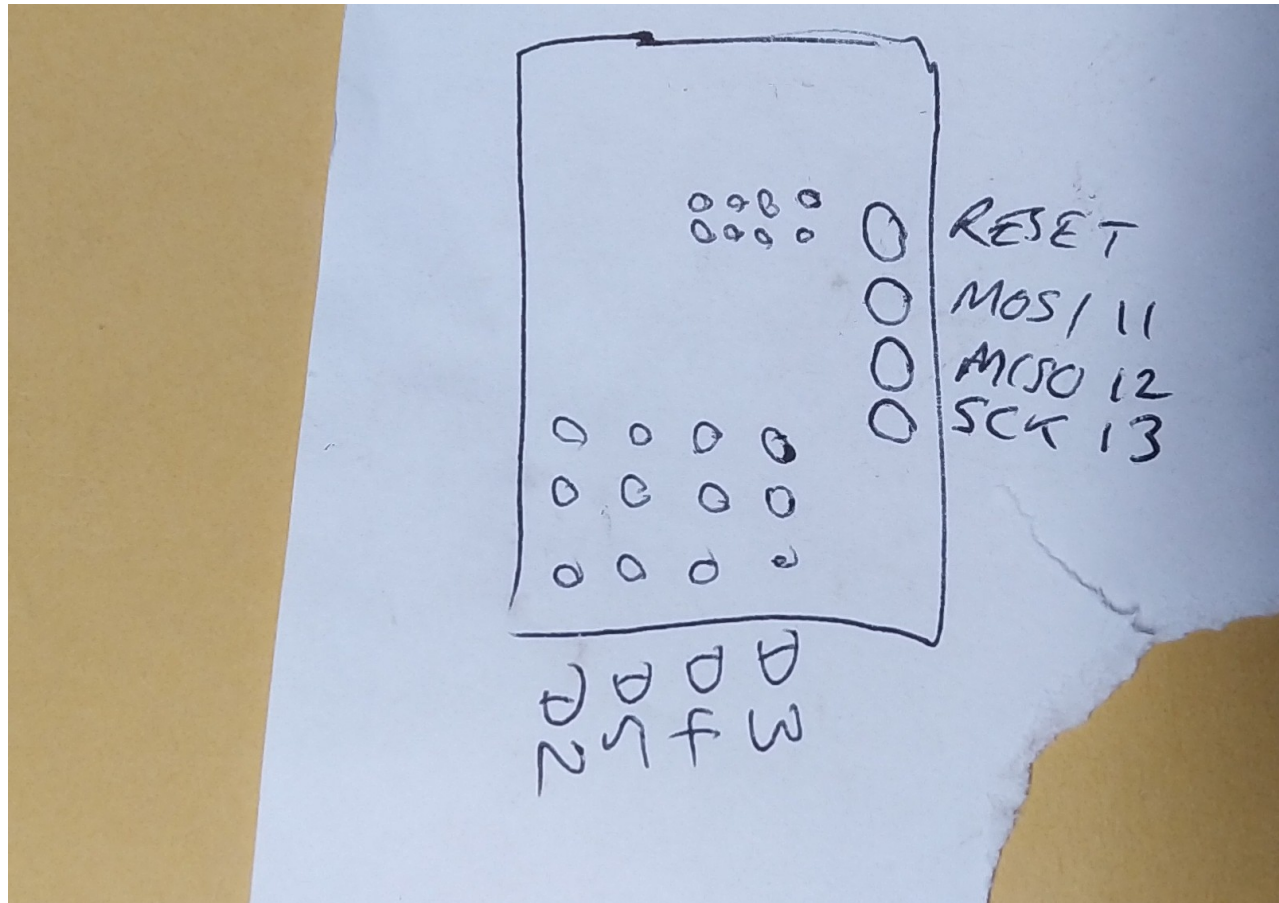
Notes:

Some boards have the traffic LED reversed, change A0 & A1 roles in sketch.
Check NRF24L01 crystal legs are cut short before mounting

D13 D12 D11
SCK MISO MOSI
Yellow White Grey Green
RESET

Programming

Servo connections:



Tobe transmitter board: (note A4/5/6/7 anomaly)

