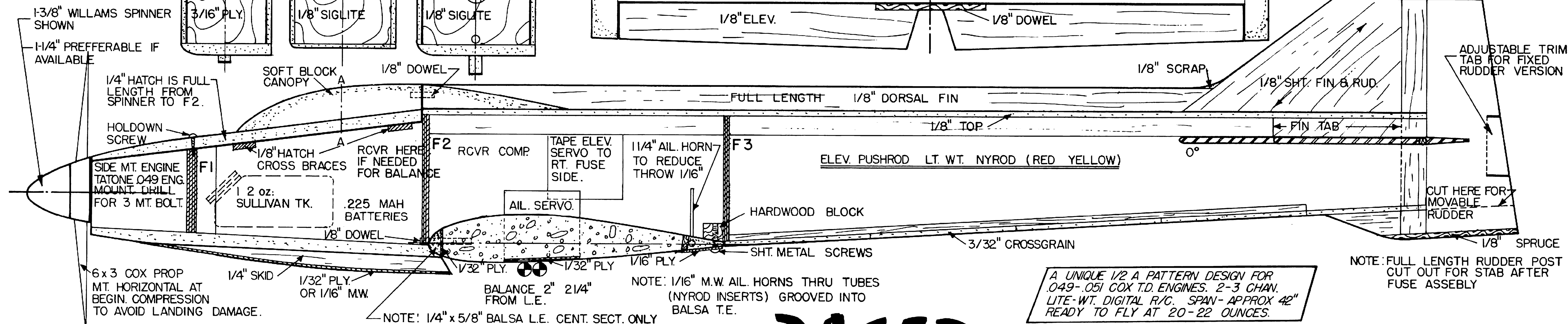
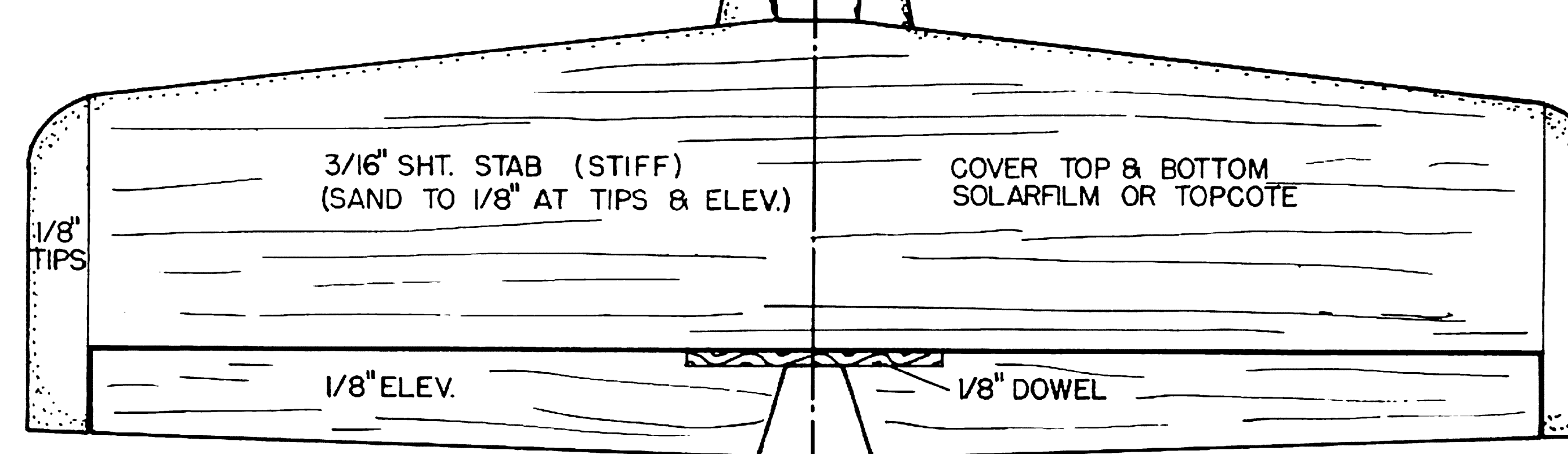
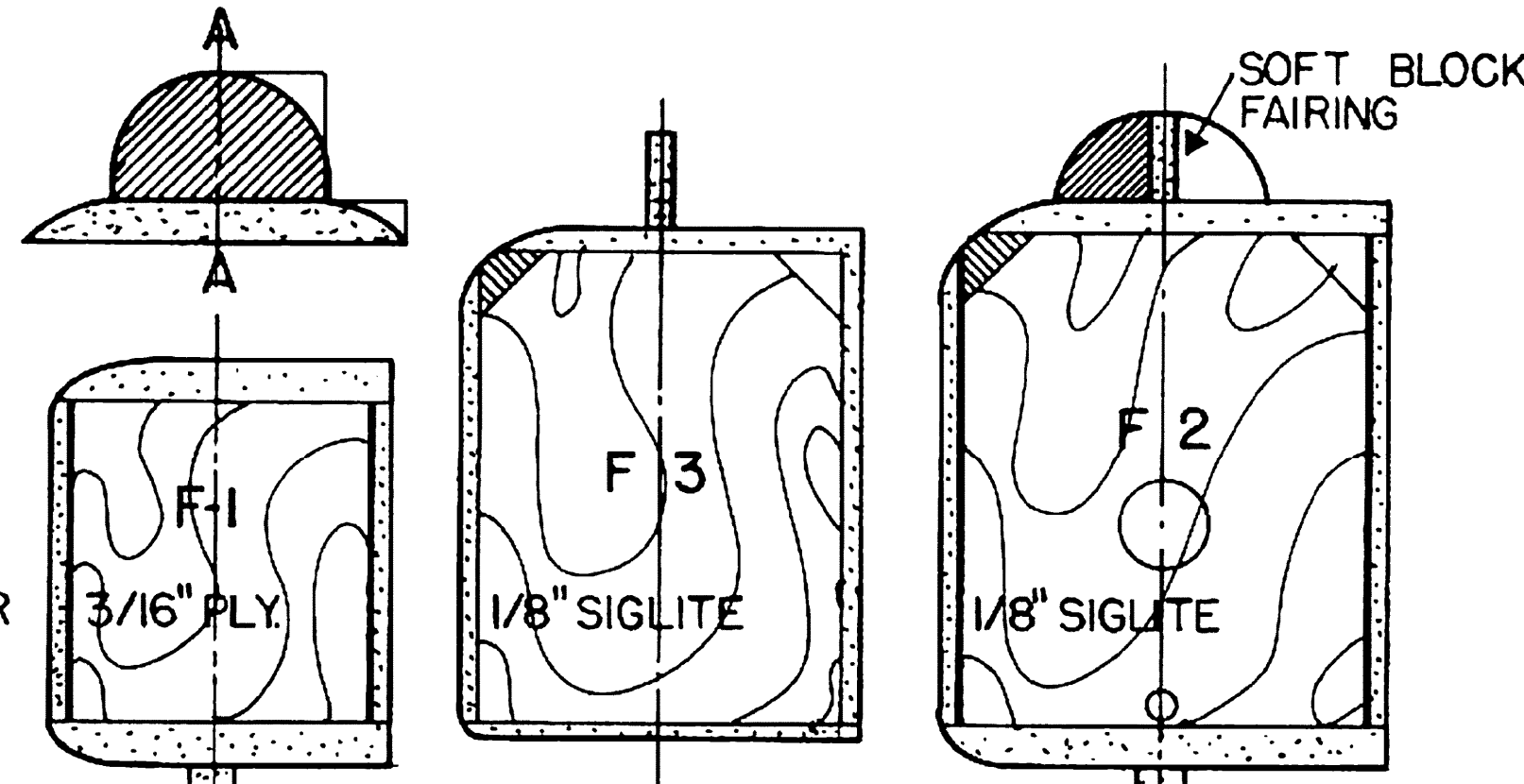


NOTE: PLANE FLYS BEAUTIFULLY ON AILERON, ELEVATOR ONLY - ALL STUN'S EXCEPT SPINS & SNAP ROLLS. RUDDER CAN BE COUPLED TO AILERON HORN IF DESIRED. HIGH PERFORMANCE IS A RESULT OF LIGHT WING LOADING & HI POWER LOADING. KEEP IT LIGHT!

SECTION A A



PACER by OWEN KAMPEN
inked by Charles Jackson

A UNIQUE 1/2 A PATTERN DESIGN FOR 049-051 COX T.D. ENGINES. 2-3 CHAN. LITE-WT. DIGITAL R/C. SPAN - APPROX 42" READY TO FLY AT 20-22 OUNCES.